

2022 SUPPLEMENTAL

Company
Catalog

2022 Vol. 2a



Engineered Adrenaline



PERFECTION™
SIMPLIFIED





IN 1999
ADVANCED FLOW ENGINEERING
WAS BORN



WHAT STARTED AS A DREAM

...and a passion for automobiles led us on this exciting journey. In the beginning, we had a vision for what an air filter should be, and what you see today is the result of that vision. From the filter media to the urethane frames to the seal design, no stone was left unturned. Our attention to detail is evident in our filters, and in every product we design and produce. Now in our 23rd year, that same approach is carried through all our product lines. Our cold air intake and exhaust systems and other product lines are second to none, all built in our 160,000+ sq. ft. facility in Corona, California, and we continue to grow in 2022 with an additional facility. Exciting and recent acquisitions have expanded our portfolio into the suspension and tuning markets, allowing us to provide even more solutions and high-quality products for true automotive enthusiasts.

Our growth and continued success would not be possible without the right team of people. We share the same dream, vision, and passion for performance. This united front is what allows us to create such exciting and compelling products. From our design and engineering teams who create the products, to the manufacturing staff who build them, to all our support staff who manage the purchasing, sales, marketing, customer service, and accounting — everyone plays a key role in the success of aFe.

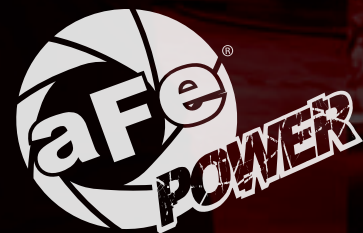
Thank you to our customers for your continued support of aFe and for celebrating with us in our 23rd year in the automotive after-market. This, our 23rd year catalog, shows how far we've come and includes our full product line for you to see. This is what we do.

SN²

Shahriar "Nick" Niakan
 President & CEO

TABLE OF CONTENTS

Who We Are	2	Billet Throttle Body	22
Research & Development	4	Carbon Cabin Air Filters	24
Proving Grounds	6	American Muscle	26
Performance Air Filters	8	Gas Trucks	28
Cold Air Intakes	10	Jeep - We Do It	30
Exhaust Products.....	12	Takeda Power	32
Suspension & Control	14	It's All About Torque	34
Engineered Products	16	Eurotrip	36
Electronic Modules	18	2022 Expansion	38
Diesel Fuel Tank	20	Go to the Source	40



WE ARE FUELED BY
HUMAN INGENUITY





PROVING GROUNDS
 IT DOESN'T LEAVE HERE UNTIL
 IT'S PROVEN TO MAKE POWER.



Strength Through Concept

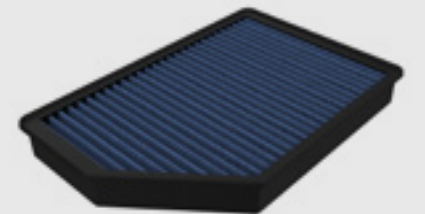
If it's a vehicle in production, you can bet we're working on making it better, faster, more powerful, agile, maneuverable, louder, and meaner. aFe Power offers multiple options designed to fit your tastes so your personality shines through every time you start the engine.

VEHICLE
20+
 PLATFORMS

OVER
6.5k
 PART NUMBERS

First to Market Is the Target

aFe POWER has made over 6,500 unique products, each one designed to enhance performance and style.





FLOW IS OUR MIDDLE NAME PERFORMANCE AIR FILTERS

Versatility at The Heart of Airflow

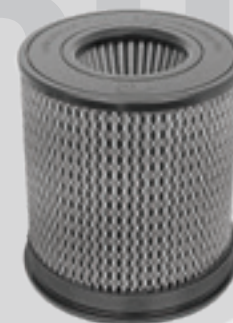
Our filters are the heart and soul of our industry-leading cold air intake systems, and in 1999, we set out to provide the ultimate air filter for OE replacement, racing, off-road, and universal applications. Not only did we focus on creating the best filter on the market, but we also made it work for any application. From the track to the trail to the work horse and back again, aFe meets the high demands we place on our vehicles.



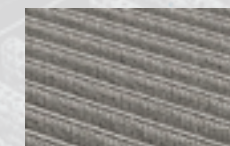
OF STYLES &
100^S
APPLICATIONS

RECOMMENDED
USAGE

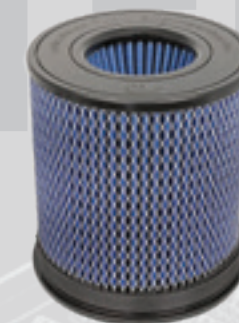
TECHNICAL
DATA



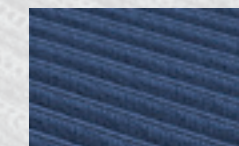
Pro Dry S
Daily Driver
Convenience



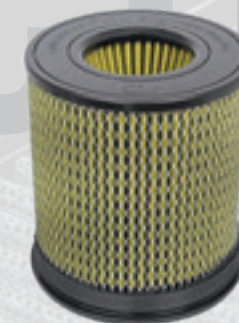
99.2% Efficiency
3-Layer
Synthetic
No Oil Required



Pro 5R
Street/Track
Performance



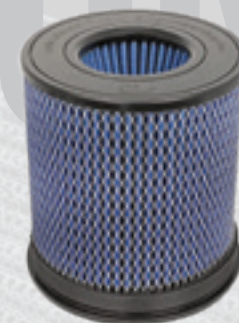
99.6% Efficiency
5-Layer
Cotton Gauze
Oiled



Pro GUARD 7
Off-Road
Severe Duty



99.7% Efficiency
7-Layer
Synthetic & Cotton
Oiled

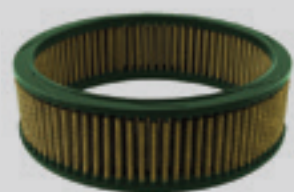


Pro 10R
Diesel
Industrial Duty



99.6% Efficiency
10-Layer
Cotton Gauze
Oiled

1999
FIRST FILTER



VEHICLE
20+
PLATFORMS



FLOW POWER AND STYLE COLD AIR INTAKES

Industry-Leading Designs That are Second to None

With innovative design processes and dyno-proven performance improvements on all of our systems, we're known for our cold air intakes — and for good reason: we make POWER!



FIRST
2001
INTAKE



Humble Beginnings
The basic adapter, filter, and bracket that started it all.



FIRST TAKEDA
2009
SPORT COMPACT



Sport Compact
gets its own style and the recognition it deserves.



MOMENTUM

The New Standard
in the industry; features a roto-molded structure, patented housing-to-filter interface, and clear sight window.



FIRST
2011
MOMENTUM

FIRST
2016
BLACK SERIES



High-End Carbon Fiber
appearance and top performance engineered specially for show-car quality and power.

FIRST
2018
TRACK SERIES



Carbon Fiber Tubes,
open element, aggressive sound, and high-powered.



FIRST QUANTUM
2018
INDUSTRIAL



The Workhorse
specially engineered for heavy-duty applications with an economical bottom line.



RAPID
2020
INDUCTION



Factory Integrated
Rapid Induction intakes that make the most of your existing equipment.





**HANDCRAFTED IN THE U.S.A.
EXHAUST PRODUCTS**



It's a Personal Statement

With performance, sound, and style that demand a presence, our exhaust systems are a direct reflection of our commitment to delivering quality products.

RUMBLE & FLOW



FIRST EXHAUST
2005
SYSTEM

FIRST
2007
MANIFOLD

HEADER
2011
PRODUCTION

DIRECT-FIT
2016
CATS



COMMAND THE DIRT AND ROAD SUSPENSION & CONTROL

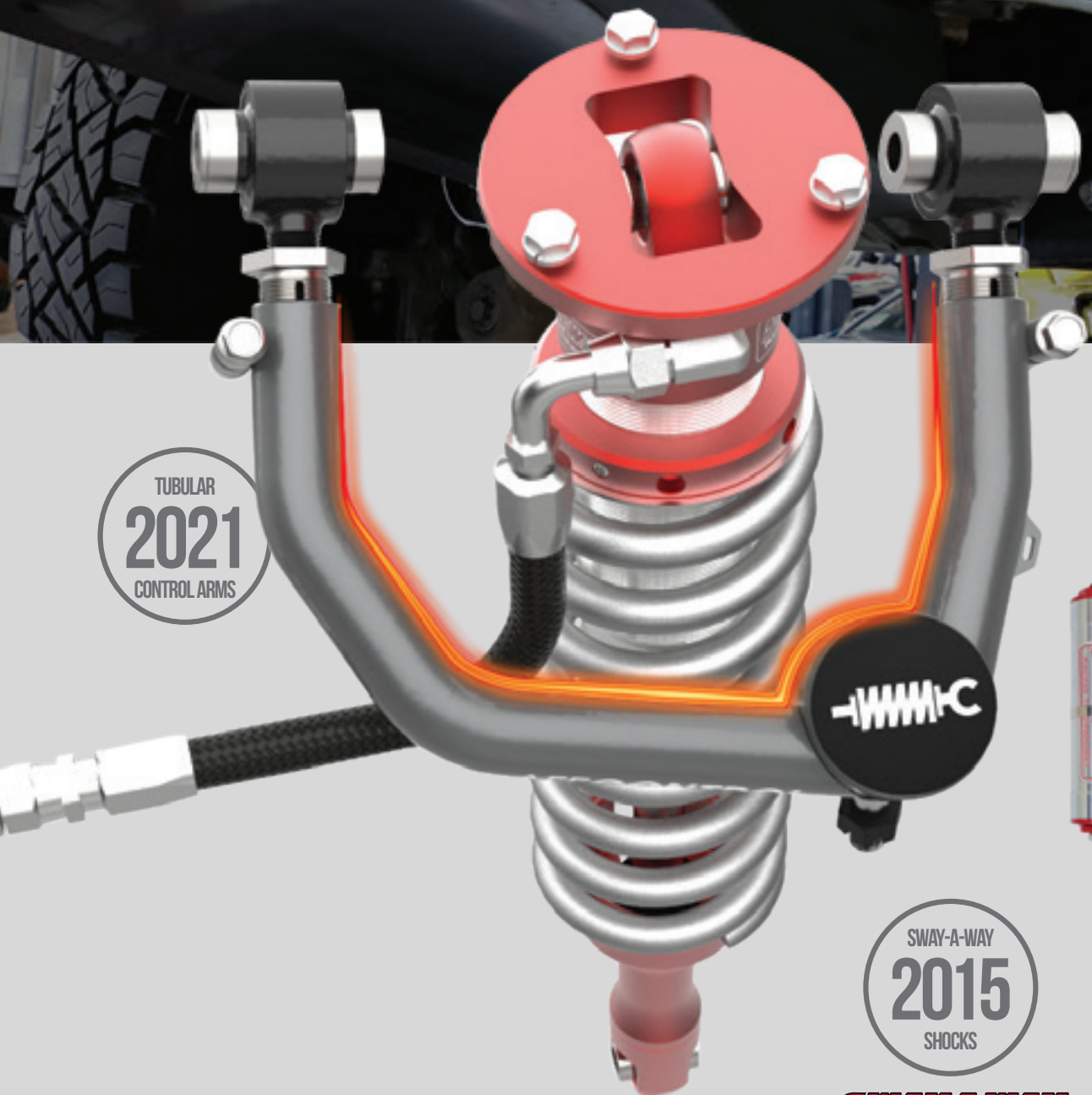


Power Without Control is Useless

It's about how it performs and feels behind the wheel. Our suspension products deliver excitement on-road, off-road, and on the track.

TRAIL / TRACK

TUBULAR
2021
CONTROL ARMS



SWAY-A-WAY
2015
SHOCKS

SWAY-A-WAY



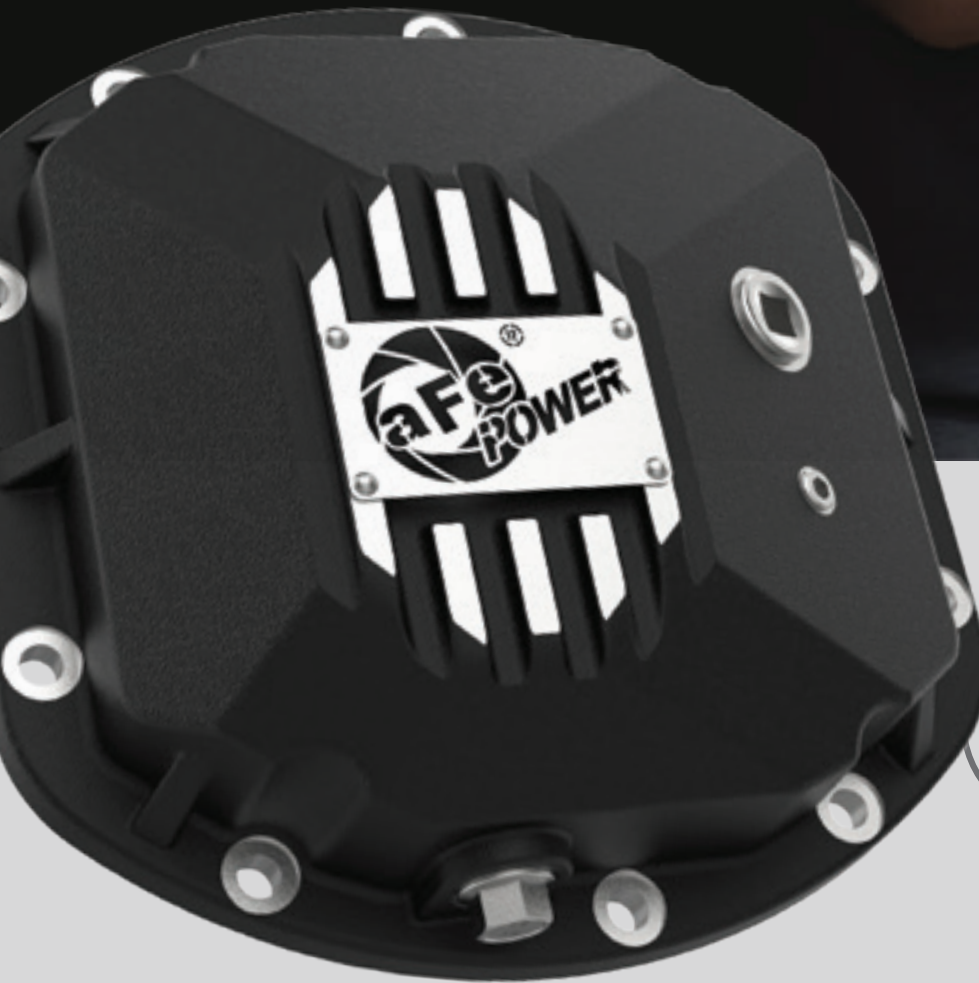
AFC CONTROL
2014
LAUNCHED

MMHC
AFECONTROL.





**METICULOUSLY MADE
ENGINEERED PRODUCTS**



FIRST
2010
DIFFERENTIAL
COVER

DFS FUEL SYSTEM
2015
LAUNCHED

FIRST
2009
INTERCOOLER

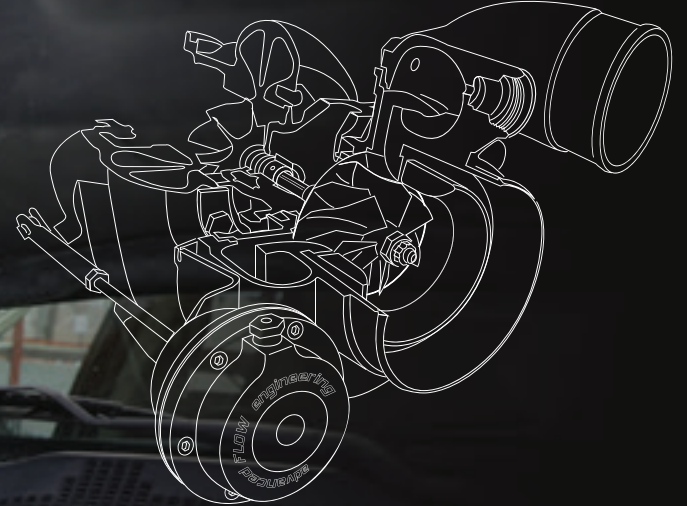
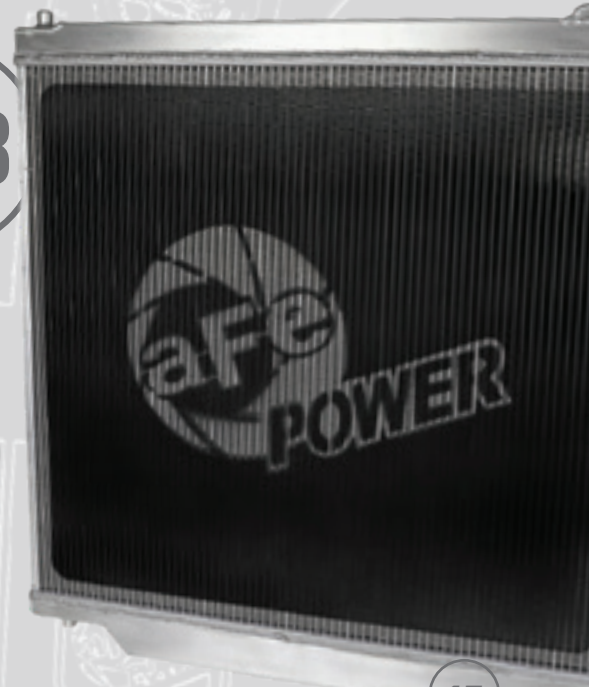


WINNER SEMA 2016
Best New Street Performance Product



TURBOCHARGERS
2011
INTRODUCED

RADIATORS
2018
INTRODUCED



Power & Protection

From turbochargers and cooling systems to protection products, our engineers are experts in our trade. Our attention to detail far surpasses the industry standard.



DIGITAL POWER ELECTRONIC MODULES



AGD®
Advanced Gauge Display Monitor

AFE BEGINS
2011
TUNER PROGRAM

Real POWER at Your Fingertips

Up your power and haul heavy loads with custom tunes, plug-and-play power modules, and digital gauge displays. Use our in-depth displays and data loggers to monitor your vehicle's health and keep it operating at optimal performance levels.

POWER ASSIST



Sprint Booster®
Increases Accelerator Response



Shift Logic®
Reduces Transmission Slippage



Scorcher® PRO
OBD II Programmer



Brake Logic®
Increases Engine Braking



Scorcher® BLUE
Bluetooth® Power Module. Use the App!



Scorcher® GT/HD
Plug & Play Power Module

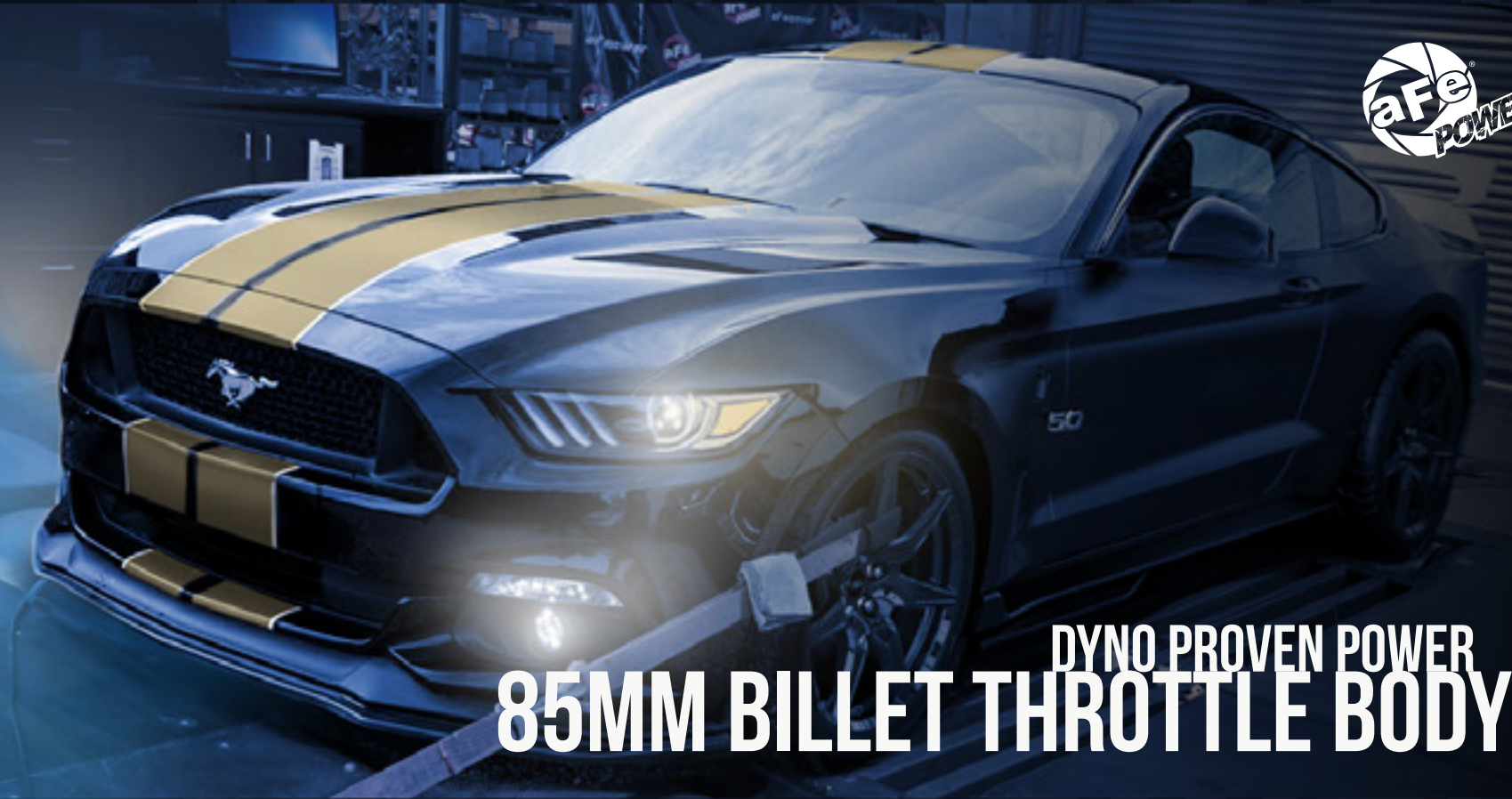


THE 08-10 FORD 6.4L POWERSTROKE LARGE CAPACITY FUEL TANK

RANGE



Eliminate range anxiety by replacing your undersized, factory tank with an aFe POWER 52-gallon tank. Designed to be a direct replacement and roto-molded out of diesel-rated LMDPE for conformability and stiffness. Everything you need is included for a hassle-free installation.



DYNO PROVEN POWER 85MM BILLET THROTTLE BODY



THROTTLE
2021
BODY RELEASE



We wouldn't do it if it didn't make POWER.
 Test results on aFe's Dynojet dyno showed power gains across the power band, topping out at +17 HP and +15 lb-ft torque at 6,000 rpm. Testing was conducted on a 2020 Mustang 5.0 comparing stock and the aFe Power BTB (all tests conducted using 91-octane fuel). No other modifications to the vehicle were made, so imagine the potential when you add in other performance enhancing products such as a cold air intake, tuner and cat-back exhaust! By the way, for you truck enthusiasts, this product also fits the F-Series (see website for exact vehicle fitment).

The Heart of the Body.
 To address any performance concerns such as rough idling or check engine lights (CEL's), aFe chose to use OEM electronics and gearing mechanism to ensure proper function and connectivity. Again, the 85mm throttle body does not require any custom tuning: it works well right out of the box.

How did we do it?
 Not only did we increase the bore diameter from the stock 80 mm to 85 mm, we redesigned the throttle body from the ground up, aerodynamically improving the air flow path.

BREATHE



Mold



Pollution



Pollen



CLEAR THE AIR CARBON CABIN AIR FILTERS

BREATHE



aFe POWER Carbon Cabin Air Filters reduce impurities such as dust, soot, and pollen from entering your car's ventilation system. Activated carbon granules remove odors and fumes so you and your passengers breathe cleaner, fresher air. (see web site for part numbers and vehicle applications).



HORSEPOWER THAT RUMBLES AMERICAN MUSCLE



American muscle is American pride.

With our performance electronics, induction, exhaust, and tuned suspension products, we offer more power and control for your late-model muscle car, all proudly developed and tested in the U.S.A.



FORM MEETS FUNCTION GAS TRUCKS



It's not just a pickup.

For work or play, your truck is your life. Whether it's a weekend trip off-roading, hauling, towing on the job, or driving your daily commute, we offer all the performance upgrades for your truck lifestyle.





GO ANYWHERE
JEEP-WE DO IT



Off-roading is more than just a hobby — it's a way of life. That's why we develop parts for everything from daily drivers to those made for the most extreme off-road adventures.



SPORT COMPACT TAKEDA POWER



It started as an aggressive debut into the Honda market, but this product has expanded to other sport compact makes. We are dedicated to progressing the legendary performance heritage of the import world.

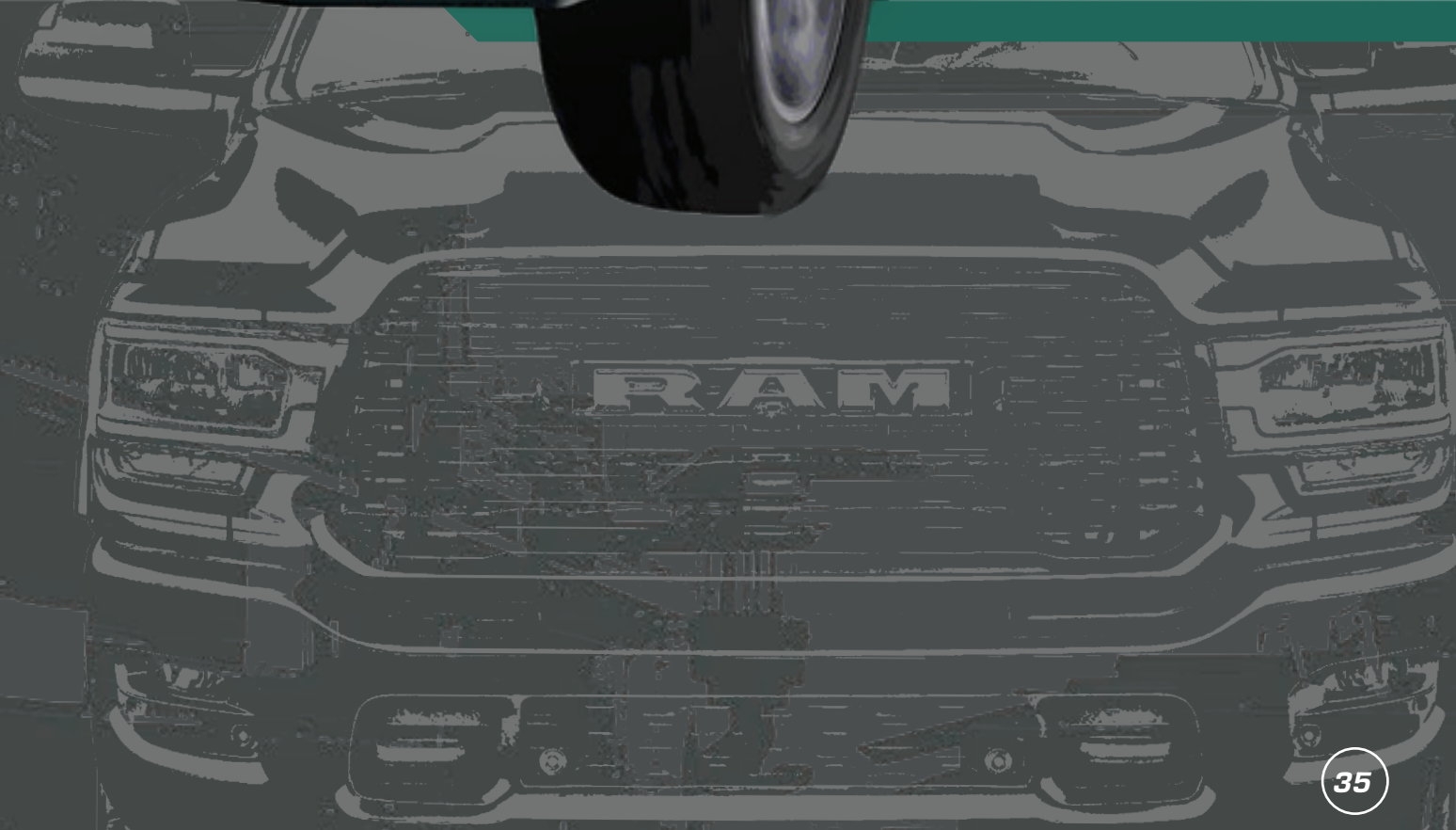




DIESEL POWER IT'S ALL ABOUT TORQUE



Just like you, we're not just looking for impressive numbers; rather, it's a quest for drivability and peak torque when you need it most. We create top-of-the-line, dyno-proven products to up your diesel's already-impressive performance output.





POWER REFINED EUROTRIP



“Power Refined”
is a philosophy that drives us to deliver quality engineering blended with innovative power
and suspension products for the like-minded enthusiast who’s pursuing
limitless freedom, technology, and style.





23 YEARS LATER, NOW ON OUR
THIRD EXPANSION



1375 SAMPSON AVENUE

aFe POWER's 23rd anniversary is highlighted

by recently acquiring a new 127,000 square foot building, only a short distance away from our Corona, CA facility. Our taste for pushing the limits kept us going- it's what innovation is all about.

Throughout the years, we've overcome obstacles, from the risks of starting a new business to the 2008 recession. Despite the pandemic and recent years that challenged us all, we persevered with optimism, teamwork, and strategy. Even with all these challenges, we have continued to grow, exceeding the capacity of our existing buildings. Acquiring this greater building enables our operations to match our growth, with the cumulation of our facilities now covering over 300,000 square feet.



GET THE BEST
GO TO THE SOURCE



Model / Year	SKU	Price
2017 Duramax 6.6L	2017 Duramax 6.6L	\$1,199
2018 Duramax 6.6L	2018 Duramax 6.6L	\$1,199
2019 Duramax 6.6L	2019 Duramax 6.6L	\$1,199
2020 Duramax 6.6L	2020 Duramax 6.6L	\$1,199
2021 Duramax 6.6L	2021 Duramax 6.6L	\$1,199

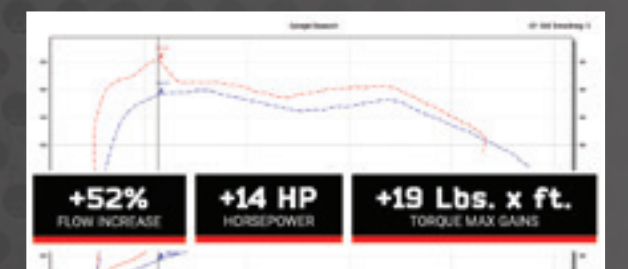
Search by Vehicle Platform

WHICH STAGE-2 IS RIGHT FOR YOU?

Educational Buyer's Guides



Detailed Product Descriptions



Verified Performance Numbers & Dyno Charts



aFePower.com

© 2022 aFe POWER • 1375 Sampson Avenue • Corona, CA 92879 • PN: 40-20131